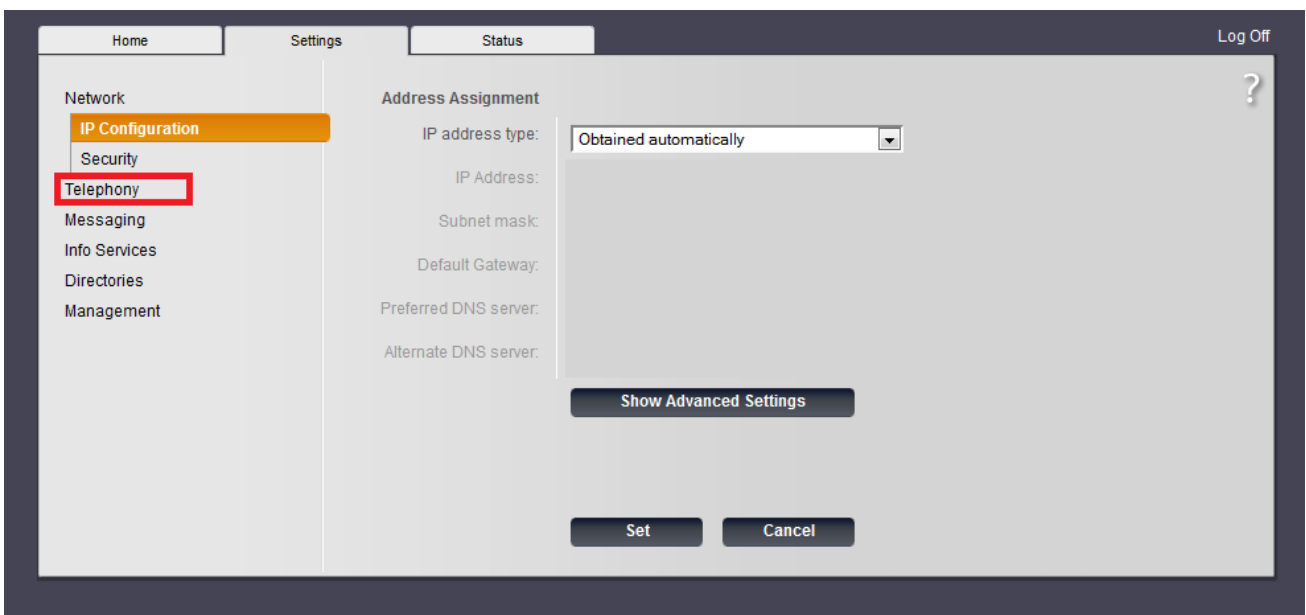
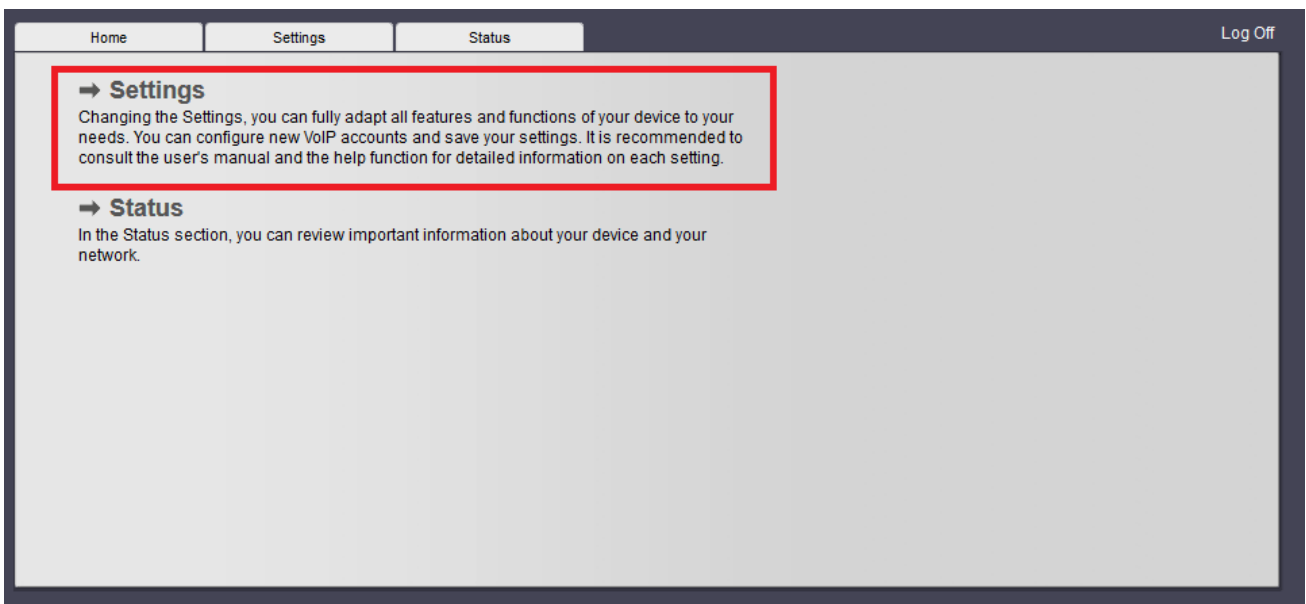
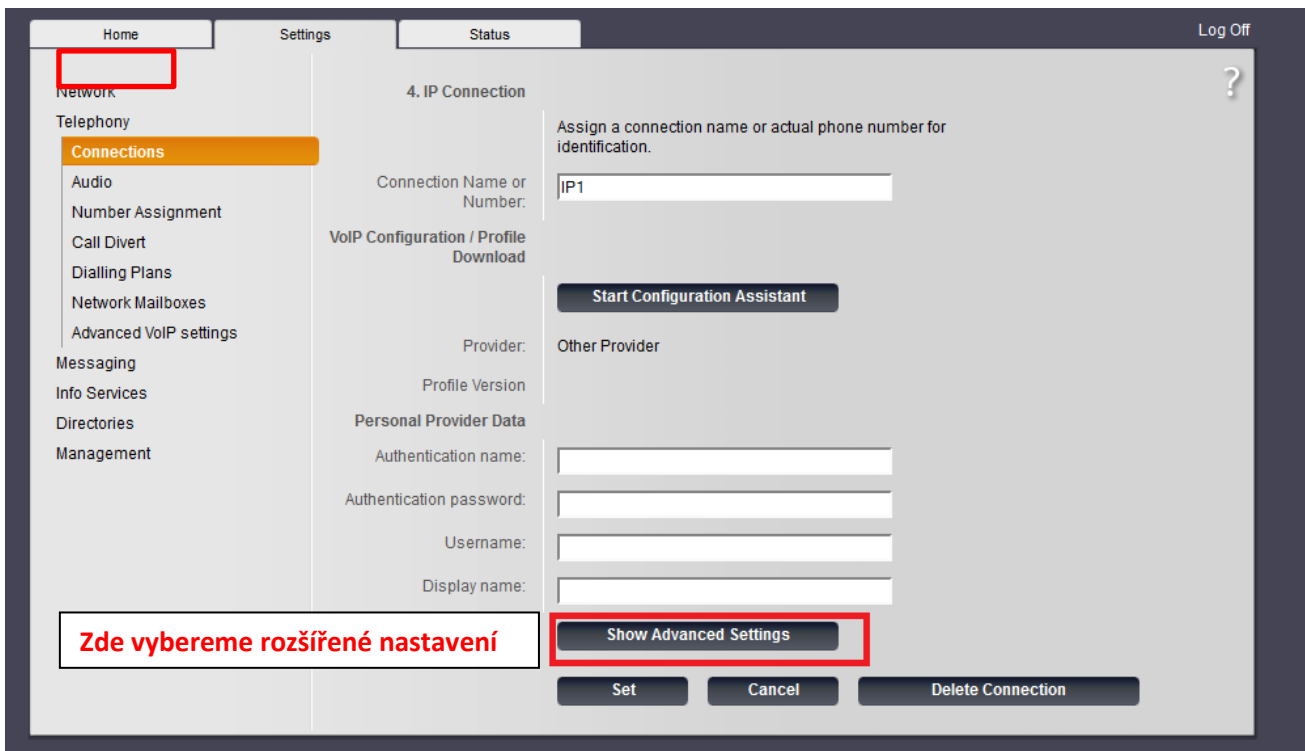
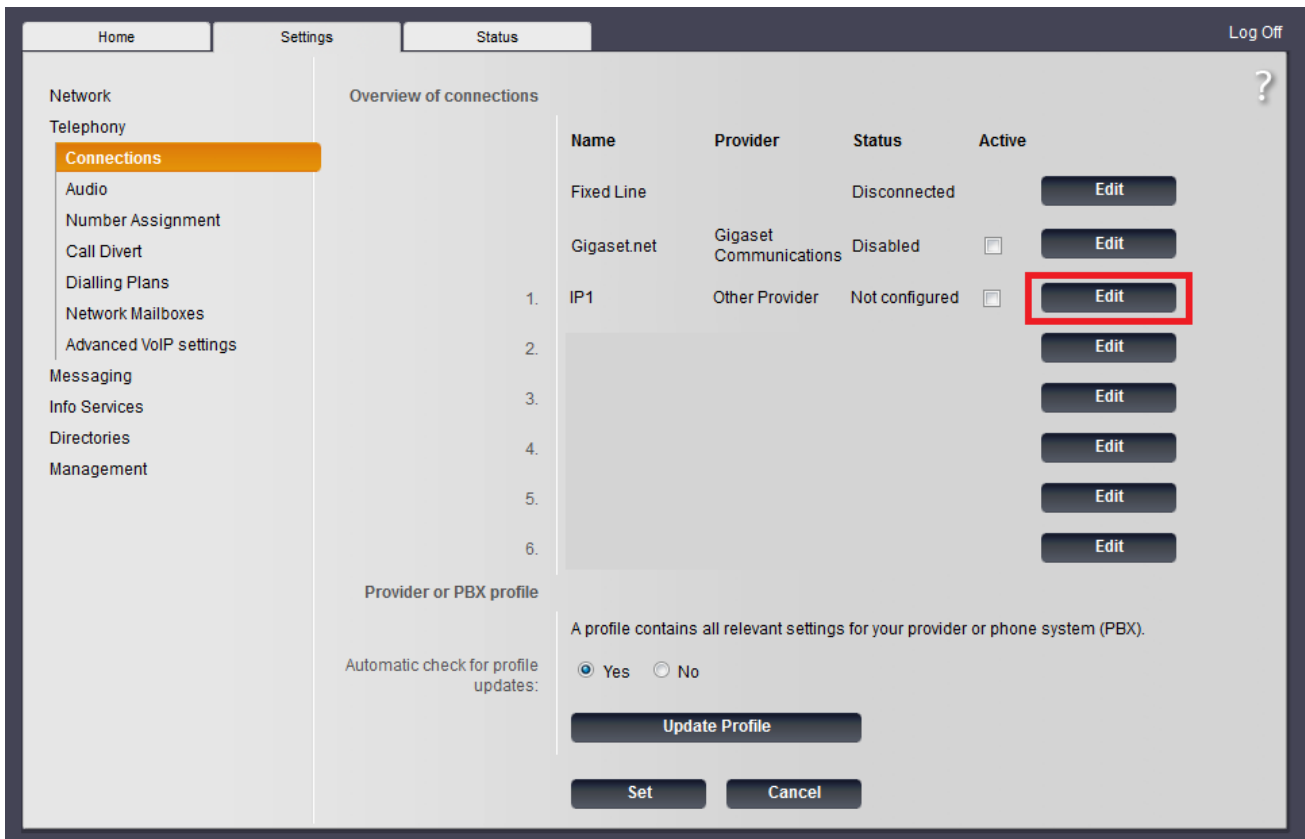


Návod k nastavení Siemens Gigaset C590 IP

- 1) Přihlaste se do Vašeho webového rozhraní a postupujte dle jednotlivých kroků.





Vybereme rozšířené nastavení a nastavíme parametry účtu a uložíme.

a) pro ha-loo:

username= 9 místné ha-loo číslo

heslo= heslo k ha-loo

proxy server= ustredna.ha-vel.cz

b) pro ha-loo Centrála:

username= 10 místné číslo klapky

heslo= heslo k dané klapce

proxy server= sip server uvedeny u dané klapky na webu (pbx1.ha-loo.cz)

c) pro ha-loo mobil:

username= hmo cislo

heslo= heslo k SIP

proxy server= pbxm.ha-loo.cz

Proxy server port= 5665

Obrázek nastavení naleznete na další straně.

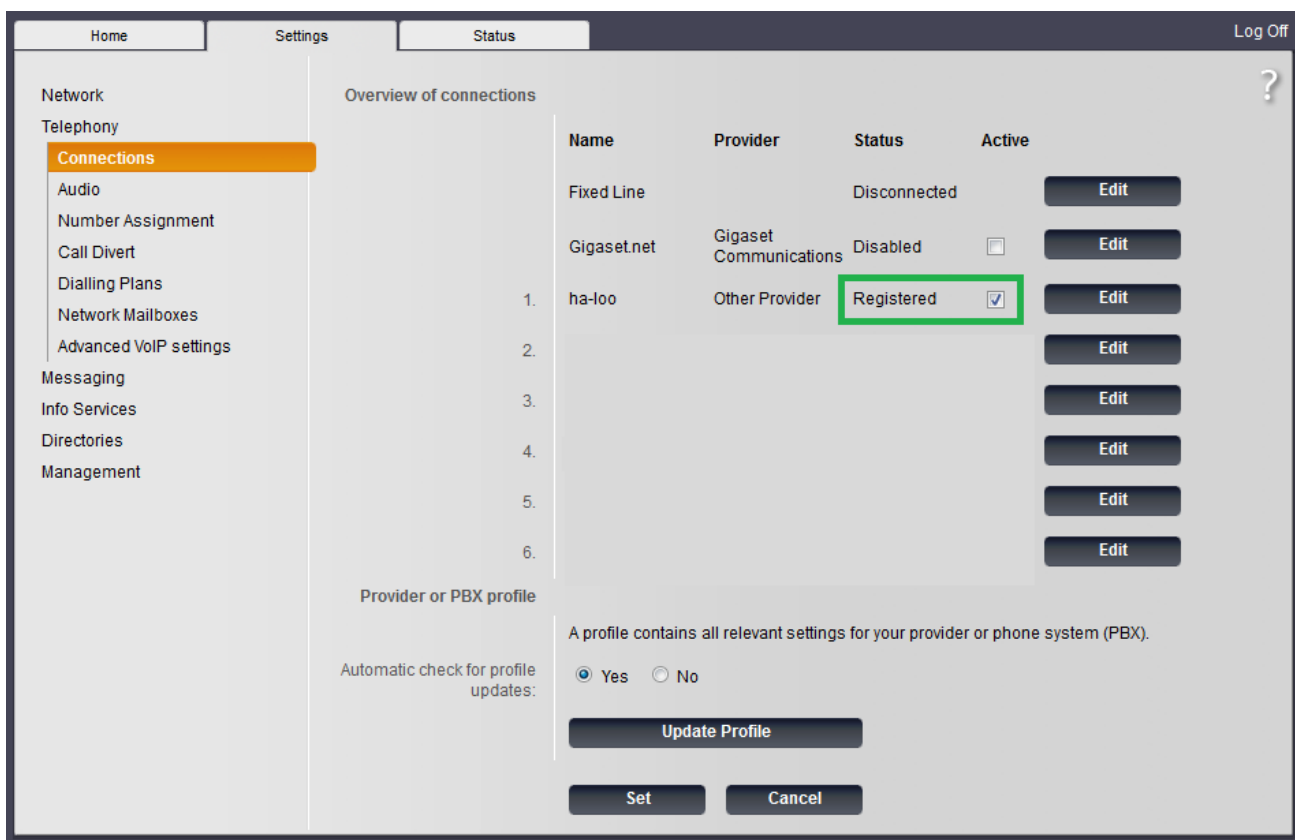
The screenshot shows the '4. IP Connection' configuration page. The left sidebar contains a menu with 'Connections' highlighted. The main content area is divided into several sections:

- 4. IP Connection**: Assign a connection name or actual phone number for identification. The 'Connection Name or Number' field contains 'ha-loo'. Below this is a 'Start Configuration Assistant' button.
- VoIP Configuration / Profile Download**: The 'Provider' is set to 'Other Provider'.
- Personal Provider Data**: This section is highlighted with a red box and contains:
 - Authentication name:
 - Authentication password:
 - Username:
 - Display name:
 - A 'Hide Advanced Settings' button is located below these fields.
- General data for your service provider**: This section is highlighted with a red box and contains:
 - Domain:
 - Proxy server address:
 - Proxy server port:
 - Registration server:
 - Registration server port:
 - Registration refresh time: sec
- Network data for your service provider**: This section contains:
 - STUN enabled: Yes No (highlighted with a red box)
 - STUN server address:
 - STUN server port:
 - STUN refresh time: sec
 - NAT refresh time: sec
 - Outbound proxy mode: Always Automatic Never (highlighted with a red box)
 - Outbound server address:
 - Outbound proxy port:
 - Select Network Protocol: (highlighted with a red box)

At the bottom of the page, there are three buttons: 'Set' (highlighted with a red box), 'Cancel', and 'Delete Connection'.

Potvrdíme tlačítkem „Set“

Po uložení by měl být tento náhled. Pokud se Vám tento náhled nezobrazí, je třeba obnovit stránku.



Pro manuální nastavení jednotlivých ruček využijte nastavení viz. obrázek níže.

